

#Jenny



Finally I get this ebook, thanks for all these I can get now!

#Rio



Cool! I'am really happy

#Markus Jensen



I did not think that this would work, my best friend showed me this website, and it does! I get my most wanted eBook

#Hun Tsu



wtf this great ebook for free?!

#Che Salsa



My friends are so mad that they do not know how I have all the high quality ebook which they do not!

#Diego Butler



so many fake sites. this is the first one which worked! Many thanks

—depth or dead spots behind doors, in corners or under cabinet—  
—hot or cold air from ducts.  
—radiant heat from sun or appliances  
—concealed pipes and chimneys  
—substantiated (avoided) areas behind the thermostat, such as an outside wall.

**IF REPLACING AN EXISTING THERMOSTAT**  
Elim of power to thermostat at furnace or heat pump. A two-manufacturer or necessary require turning off two switches or disconnects. Remove any existing wallplate or subbase from the wall. Label or write down each wire color with the letter number on the wiring terminal and wire is removed, to avoid re-wiring later.

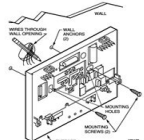
**IF NEW INSTALLATION**  
Base on the back of the selected wall location, and pull about 3 in. (76 mm) of wire through the opening. Color-coded 14-gauge thermostat cable with one conductor for each wiring terminal is recommended. Good service practice recommends insulating cable with one or two more conductors than the immediate application requires.

**MOUNTING SUBBASE**  
The subbase does not require leveling for proper operation, but for appearance only.  
Remove thermostat from subbase, see Fig. 1.  
The subbase means directly outside of all with the screws in back for the package. For the subbase in a template, and with a pencil, mark the two mounting screw position, see Fig. 2. Use 1/4 in. (6.35 mm) drill holes for anchors. Carefully tap anchors into holes until they are flush with the wall surface. Then insert the subbase using two screws provided. Carefully tighten screws level top surface of subbase, then securely tighten screws.

Fig. 1—Removing thermostat from subbase.



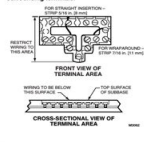
Fig. 2—Mounting subbase on wall.



**WIRING**  
All wiring must comply with local electrical codes and ordinances.  
Disconnect power before wiring to prevent electrical shock or equipment damage.  
The design of the terminal barrier permits installation of straight or conventional wraparound wiring connections. Refer to Fig. 4.6 for typical lookups of subbase and thermostat.

**NOTE:** Keep all wiring restricted to ribbed area surrounding terminals to assure thermostat/subbase contact, see Fig. 5.

Fig. 3—Keep wiring restricted to ribbed area surrounding terminals.



[Download PDF version of :](#)  
**Honeywell Chronotherm 3 Manual**