

#Jenny



Finally I get this ebook, thanks for all these I can get now!

#Rio



Cool! I'am really happy

#Markus Jensen



I did not think that this would work, my best friend showed me this website, and it does! I get my most wanted eBook

#Hun Tsu



wtf this great ebook for free?!

#Che Salsa



My friends are so mad that they do not know how I have all the high quality ebook which they do not!

#Diego Butler



so many fake sites. this is the first one which worked! Many thanks

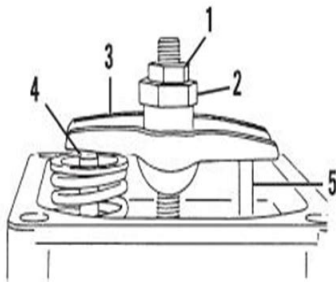


Fig. HE2-6—Valve clearance should be 0.13-0.17 mm (0.005-0.007 in.) for intake and 0.18-0.22 mm (0.007-0.009 in.) for exhaust. Loosen rocker arm jam nut (1) and turn adjusting nut (2) to obtain desired clearance.

- |                   |               |
|-------------------|---------------|
| 1. Jam nut        | 4. Valve stem |
| 2. Adjustment nut | clearance     |
| 3. Rocker arm     | 5. Push rod   |

[Download PDF version of :](#)  
**Honda Gx390 Engine Problems**